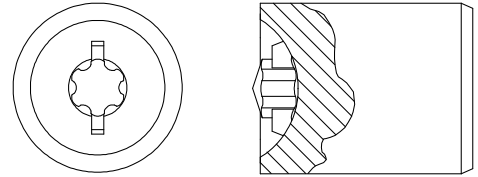


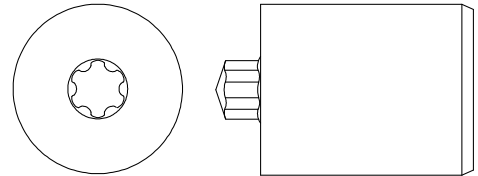
### Combination / Slotted Punch

| Part Number | Drive Size | A<br>inch/mm | B<br>inch/mm | Penetration<br>inch/mm | OD<br>inch/mm | Length<br>inch/mm |
|-------------|------------|--------------|--------------|------------------------|---------------|-------------------|
| 6PLI-575    | 6IP        | 0.069/1.75   | .053/1.35    | .030/.76               | .437/11.10    | 1.000/25.40       |
| 7PLI-575    | 7IP        | 0.820/2.08   | .063/1.60    | .035/.89               | .437/11.10    | 1.000/25.40       |
| 8PLI-575    | 8IP        | 0.095/2.41   | .073/1.85    | .041/1.04              | .437/11.10    | 1.000/25.40       |
| 10PLI-575   | 10IP       | 0.111/2.82   | .085/2.16    | .049/1.24              | .562/14.27    | 1.000/25.40       |
| 10PLI-576   | 10IP       | 0.111/2.82   | .085/2.16    | .049/1.24              | .562/14.27    | 1.000/25.40       |
| 15PLI-575   | 15IP       | 0.132/3.35   | .102/2.59    | .059/1.50              | .562/14.27    | 1.000/25.40       |
| 20PLI-575   | 20IP       | 0.155/3.94   | .155/3.94    | .068/1.73              | .562/14.27    | 1.000/25.40       |
| 25PLI-575   | 25IP       | 0.179/4.55   | .137/3.48    | .078/1.98              | .875/22.23    | 1.000/25.40       |
| 27PLI-575   | 27IP       | 0.201/5.11   | .157/3.99    | .088/2.24              | .875/22.23    | 1.000/25.40       |
| 30PLI-575   | 30IP       | 0.222/5.64   | .172/4.37    | .097/2.46              | .875/22.23    | 1.000/25.40       |
| 40PLI-575   | 40IP       | 0.267/6.79   | .207/5.26    | .116/2.95              | .875/22.23    | 1.000/25.40       |
| 45PLI-575   | 45IP       | 0.313/7.95   | .246/6.25    | .137/3.48              | 1.000/25.40   | 1.000/25.40       |
| 50PLI-575   | 50IP       | 0.353/8.97   | .274/6.96    | .155/3.94              | 1.250/31.75   | 1.000/25.40       |
| 55PLI-575   | 55IP       | 0.448/11.38  | .358/9.09    | .198/5.03              | 1.250/31.75   | 1.000/25.40       |



### Flat Head Punch

| Part Number | Drive Size | A<br>inch/mm | B<br>inch/mm | Penetration<br>inch/mm | OD<br>inch/mm | Length<br>inch/mm |
|-------------|------------|--------------|--------------|------------------------|---------------|-------------------|
| 1PLI-131    | 1IP        | .035/.889    | .025/.635    | .017/.432              | .437/11.10    | 1.000/25.40       |
| 1PLI-132    | 1IP        | .035/.889    | .025/.635    | .015/.381              | .437/11.10    | 1.000/25.40       |
| 1PLI-133    | 1IP        | .035/.889    | .025/.635    | .013/.330              | .437/11.10    | 1.000/25.40       |
| 1PLI-134    | 1IP        | .035/.889    | .025/.635    | .012/.305              | .437/11.10    | 1.000/25.40       |
| 2PLI-131    | 2IP        | .040/1.02    | .028/.711    | .019/.483              | .437/11.10    | 1.000/25.40       |
| 2PLI-132    | 2IP        | .040/1.02    | .028/.711    | .017/.432              | .437/11.10    | 1.000/25.40       |
| 2PLI-133    | 2IP        | .040/1.02    | .028/.711    | .015/.381              | .437/11.10    | 1.000/25.40       |
| 2PLI-134    | 2IP        | .040/1.02    | .028/.711    | .013/.330              | .437/11.10    | 1.000/25.40       |
| 3PLI-131    | 3IP        | .047/1.19    | .033/.838    | .023/.584              | .437/11.10    | 1.000/25.40       |
| 3PLI-132    | 3IP        | .047/1.19    | .033/.838    | .021/.533              | .437/11.10    | 1.000/25.40       |
| 3PLI-133    | 3IP        | .047/1.19    | .033/.838    | .018/.457              | .437/11.10    | 1.000/25.40       |
| 3PLI-134    | 3IP        | .047/1.19    | .033/.838    | .016/.406              | .437/11.10    | 1.000/25.40       |
| 4PLI-131    | 4IP        | .054/1.37    | .039/.991    | .026/.660              | .437/11.10    | 1.000/25.40       |
| 4PLI-132    | 4IP        | .054/1.37    | .039/.991    | .024/.610              | .437/11.10    | 1.000/25.40       |
| 4PLI-133    | 4IP        | .054/1.37    | .039/.991    | .021/.533              | .437/11.10    | 1.000/25.40       |
| 4PLI-134    | 4IP        | .054/1.37    | .039/.991    | .018/.457              | .437/11.10    | 1.000/25.40       |



**1. Punch materials:**

- M2 at RC 61-64
- M42 at RC 63-65

**2. Special penetrations available. Specify required penetration when ordering.**

**3. Oversize available for heavy plating and hot heading applications.**

**4. PVD Coatings available for cold & hot heading applications.**